

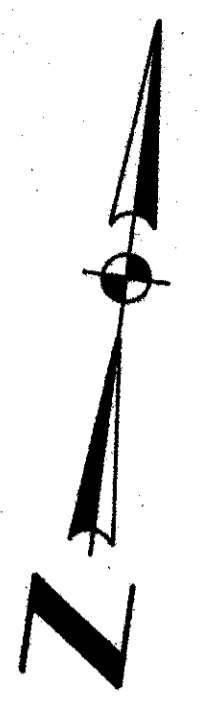
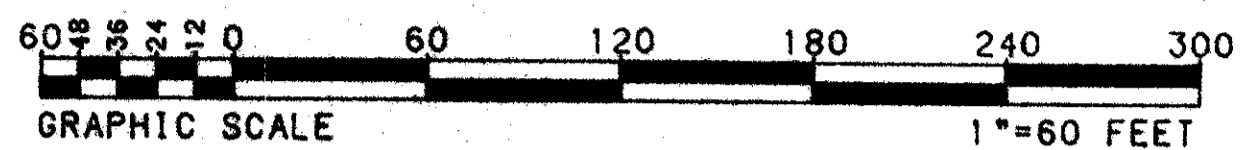
46/112

LA MIRADA AT BOCA POINTE - PLAT ONE

"PART OF A P.U.D."

112

BEING A REPLAT OF A PORTION OF TRACT "J" OF THE PLAT "BOCA POINTE NO. 1", PLAT BOOK 42, PAGES 141 THRU 143 INCLUSIVE, PALM BEACH COUNTY RECORDS LYING IN SECTION 33, TOWNSHIP 47 SOUTH, RANGE 42 EAST PALM BEACH COUNTY, FLORIDA
JULY, 1983

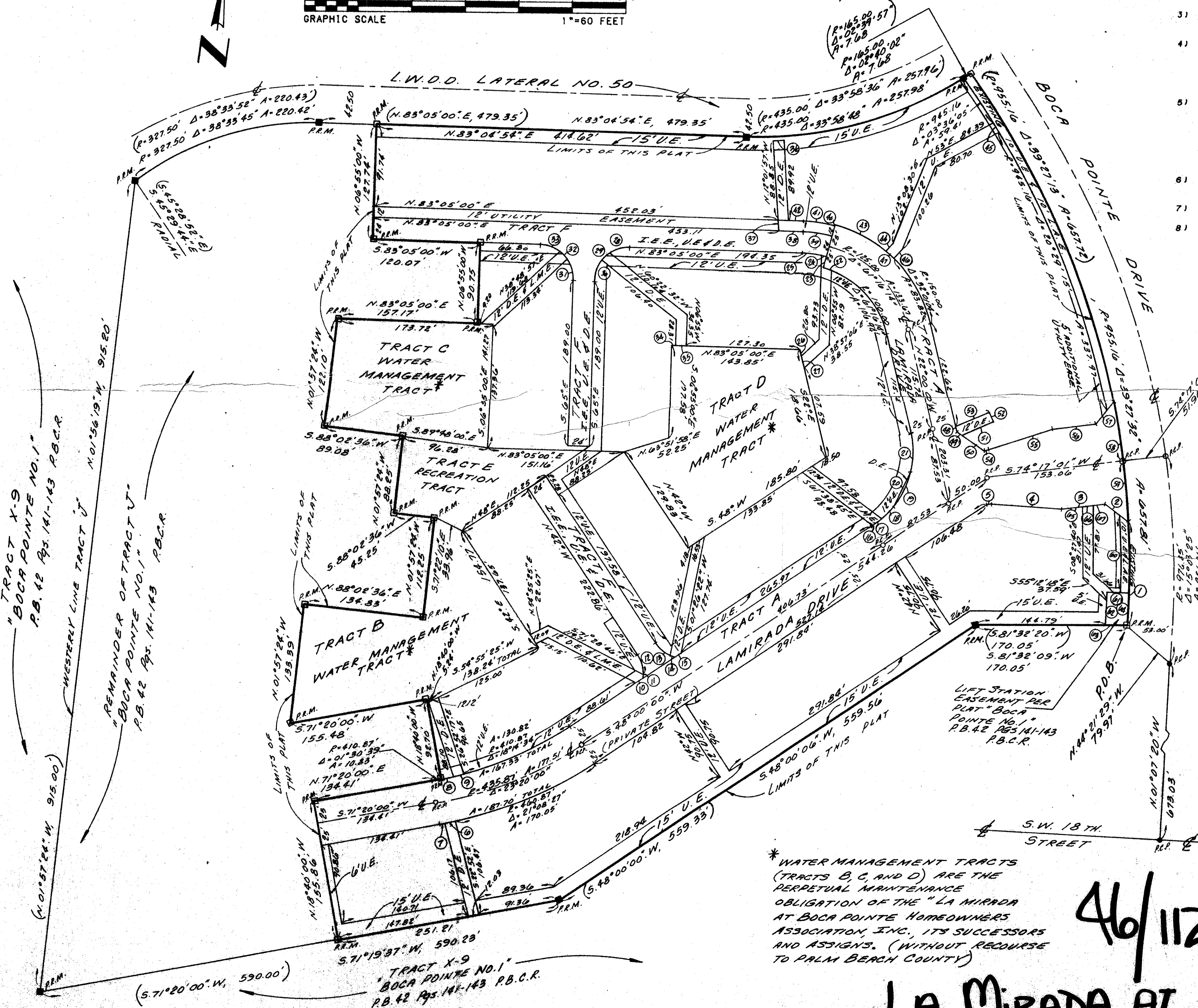


SURVEY NOTES:

- BEARINGS AS SHOWN HEREON ARE BASED UPON THE PLAT "BOCA POINTE NO. 1" AS RECORDED IN PLAT BOOK 42, AT PAGES 141 THRU 143 INCLUSIVE, PALM BEACH COUNTY RECORDS (THE CENTERLINE OF "BOCA POINTE DRIVE NORTH OF S.W. 18TH STREET IS NORTH 01°07'20" WEST).
- DENOTES FOUND P.R.M. (PERMANENT REFERENCE MONUMENT) NO. 1141
 - DENOTES SET P.R.M. (PERMANENT REFERENCE MONUMENT) NO. 2883.
- DENOTES FOUND P.C.P. (PERMANENT CONTROL POINT) NO. 1141
 - DENOTES SET P.C.P. (PERMANENT CONTROL POINT) NO. 2883
- () DENOTES BOUNDARY DATA TAKEN FROM THE PLAT "BOCA POINTE NO. 1" AS RECORDED IN PLAT BOOK 42, AT PAGES 141 THRU 143, INCLUSIVE OF THE PUBLIC RECORDS OF PALM BEACH COUNTY, FLORIDA.
- A- D.E. INDICATES DRAINAGE EASEMENT.
- U.E. INDICATES UTILITY EASEMENT.
- L.M.E. INDICATES LAKE MAINTENANCE EASEMENT (FOR ACCESS TO WATER MANAGEMENT TRACTS).
- L.A.E. INDICATES LIMITED ACCESS EASEMENT.
- I.E.E. INDICATES INGRESS & EGRESS EASEMENT.
- P.B.C.R. INDICATES PALM BEACH COUNTY RECORDS.
- NO BUILDINGS OR ANY KIND OF CONSTRUCTION SHALL BE PLACED ON UTILITY OR DRAINAGE EASEMENTS.
- NO STRUCTURES, TREES OR SHRUBS SHALL BE PLACED ON DRAINAGE EASEMENTS.
- APPROVAL OF LANDSCAPING ON UTILITY EASEMENTS OTHER THAN WATER AND SEWER SHALL BE ONLY WITH THE APPROVAL OF ALL UTILITIES OCCUPYING SAME.

ADDITIONAL COURSE AND CURVE TABLE

NO.	BEARING	DISTANCE
1	R-955.16 DELTA-06°58'43" A=116.34	
2	N. 60°42'59". W	33.37
3	S. 74°17'01". W	48.94
4	S. 85°09'42". W	79.48
5	S. 74°17'01". W	4.29
6	R-460.87 DELTA-01°29'37" A=12.01	
7	R-460.87 DELTA-00°42'00" A= 5.63	
8	R-410.87 DELTA-01°54'12" A=13.05	
9	R-440.87 DELTA-01°40'39" A=12.03	
10	N. 48°00'00". E	9.39
11	R-38.00 DELTA-06°14'48" A= 4.14	
12	R-38.00 DELTA-34°53'35" A=23.14	
13	R-38.00 DELTA-35°51'01" A=23.78	
14	R-38.00 DELTA-20°07'59" A=10.60	
15	N. 48°00'00". E	11.74
16	R-100.00 DELTA-00°19'24" A= 0.56	
17	R-100.00 DELTA-07°08'54" A=12.48	
18	R-100.00 DELTA-10°33'39" A=18.43	
19	R-100.00 DELTA-24°59'00" A=43.60	
20	N. 17°28'33". E	43.26
21	R-100.00 DELTA-26°59'03" A=47.10	
22	R-100.00 DELTA-05°33'33" A= 9.70	
23	N. 06°43'46". E	13.00
24	R-113.00 DELTA-02°59'24" A= 5.90	
25	R-113.00 DELTA-10°39'22" A=21.02	
26	S. 22°00'00". E	7.35
27	S. 22°00'00". E	13.73
28	R-38.00 DELTA-36°08'40" A=23.97	
29	R-38.00 DELTA-18°21'52" A=12.20	
30	R-38.00 DELTA-27°29'28" A=23.54	
31	R-38.00 DELTA-35°56'36" A=23.84	
32	R-38.00 DELTA-18°10'16" A=12.05	
33	R-38.00 DELTA-35°53'08" A=23.80	
34	N. 83°05'00". E	4.55
35	N. 83°05'00". E	12.00
36	N. 77°58'04". E	12.00
37	S. 12°01'57". E	12.05
38	N. 83°05'00". E	28.11
39	R-137.00 DELTA-13°38'46" A=32.63	
40	N. 06°43'46". E	1.00
41	R-149.00 DELTA-13°38'46" A=35.49	
42	S. 83°05'00". W	17.14
43	R-150.00 DELTA-24°40'05" A=64.58	
44	N. 33°41'24". E	12.03
45	R-945.16 DELTA-00°43'43" A=12.02	
46	S. 33°41'24". W	14.21
47	R-150.00 DELTA-04°35'06" A=12.00	
48	S. 22°00'15". E	5.99
49	S. 63°51'29". E	7.17
50	S. 67°51'29". E	30.07
51	N. 57°38'25". E	38.11
52	N. 32°21'35". W	12.00
53	S. 57°38'25". W	40.78
54	N. 74°17'01". E	0.42
55	N. 63°24'20". E	79.48
56	N. 74°17'01". E	48.94
57	N. 29°07'01". E	33.37
58	R-955.16 DELTA-04°07'06" A=68.65	
59	R-955.16 DELTA-04°07'06" A=68.65	
60	R-945.16 DELTA-05°24'25" A=89.19	
61	S. 83°16'27". W	25.00
62	R-930.16 DELTA-02°12'10" A=35.76	
63	N. 81°32'09". W	25.06
64	R-955.16 DELTA-02°05'58" A=35.00	
65	N. 74°17'01". E	23.41
66	N. 74°17'01". E	12.10
67	N. 74°17'01". E	13.44



0211-008

46/112

LA MIRADA AT BOCA POINTE

SHEET 2 OF 2 SHEETS

PREPARED BY
GRAVEN THOMPSON & ASSOCIATES, INC.
 SURVEYORS - ENGINEERS - PLANNERS - ARCHITECTS
 5901 S.W. 11TH AVENUE - FORT LAUDERDALE, FLORIDA 33309
 DATED JULY, 1983 DRAWN BY J.H. FITSCHEN